

cardioWell

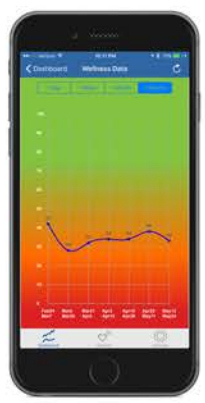
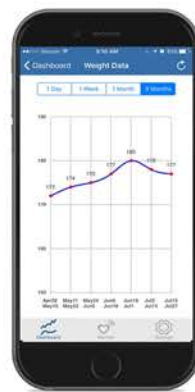


Cardiowell 'ALWAYS CONNECTED' Weight Scale WEIGHT BETTER

Accurate and real-time weight tracking has never been easier. Wherever you are, you'll get to track progress of your weight goal. Cellular based 'Always Connected' scale makes results immediately available for secure viewing and sharing. Just step and go, your weight is automatically transmitted over a 3G cellular network. No need to pair your phone.

Any one can monitor their progress in real-time from CardioWell. Downloading the CardioWell app from your mobile phone at the App Store is free.

Mobile technology simplifies the ability to collect, track and share your personal health information. 3G 'always connected' devices work right out of the box reducing the need for technical assistance. The materials used to create the CardioWell Weight Scale are guaranteed of the highest quality. CardioWell weight scales go through numerous tests to ensure high reliability. This healthcare solution allows for weight management from anywhere.



WHY YOU'LL LOVE CARDIOWELL WEIGHT SCALE



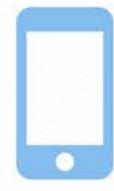
Accessibility

Works out of the box requiring no installation. Weight data is made immediately available on the CardioWell iPhone App.



Accuracy

All CardioWell products are carefully studied and tested. It is our mission to provide best-in-class accuracy for data acquired by our back end system.



On-The-Go

Mobile technology enables you to have real-time weight tracking anywhere you go. The ease of weight management is in the palm of your hands.



Health Management

Weight Management is essential to one's health. The reliability and availability of the results can help you identify and improve the health management program that is well-suited for you.



Cardiowell 'ALWAYS CONNECTED' Weight Scale WEIGHT BETTER

Connectivity Cost: The first-year cost is included. Future years connectivity is \$3/month.

Technical Specifications

Display: Large LED display
(2.4" x 1.6" / 6.1 cm x 4.1 cm)

Maximum Capacity: 440 lb / 200 kg

Resolution: 0.2 lb / 0.1 kg

Power Source: 4 x 1.5V AA alkaline
(included)

Dimensions: 12.6" x 12.6" x 1.1";
32 cm x 32 cm x 2.8 cm

Weight: 5.1 lb / 2.3kg, including batteries

Battery Life: 1 year with one
measurement per day

Units: lb, kg

Connectivity: GSM in over 20 countries

Packaging and Shipping Specifications

Unit (Box)	Dimensions (L x W x H)	Weight	Individual Item Cube
BT004	14.75" x 14.75" x 2.13" 37.5 cm x 37.5 cm x 5.4 cm	6.2 lb 2.8 kg	0.27 ft3 0.008 m3
Case 5 units	Dimensions (L x W x H)	Weight	Case Cube
5xBT004	15.6" x 11.8" x 16" 39.6cm x 30cm x 40.7cm	30.7 lb 13.9 kg	1.71 ft3 0.048 m3

Custom Branding - We offer branding options and other customizations